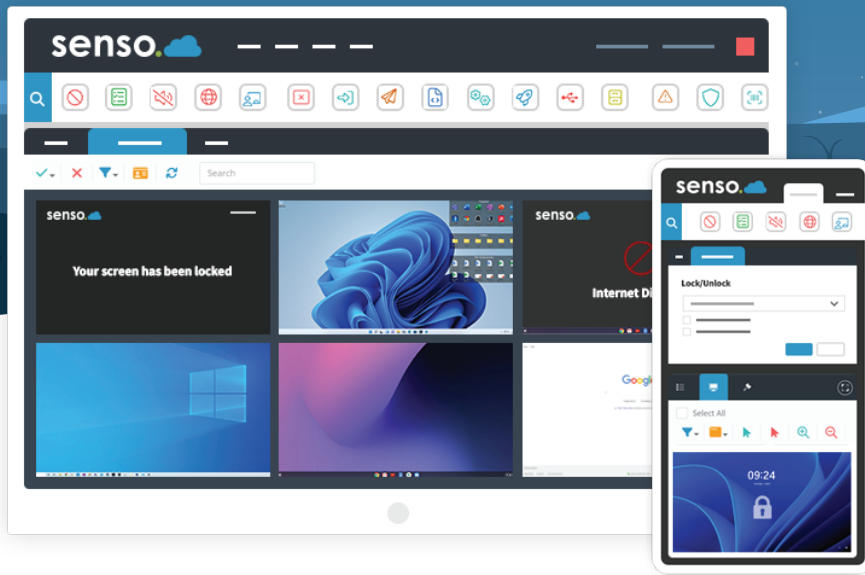




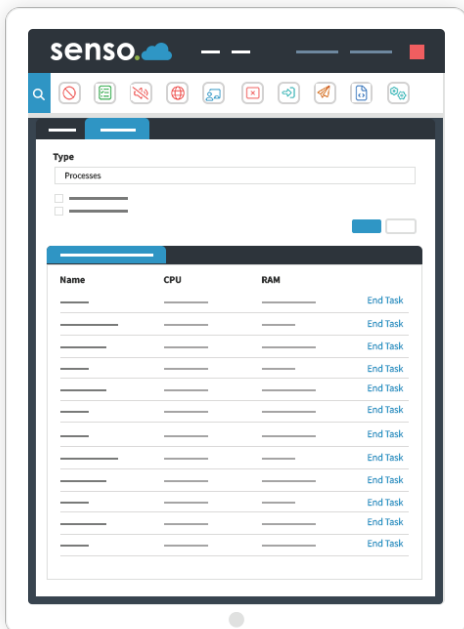
# Network Cloud Bundle

Provides IT teams with a comprehensive suite of network administration tools. Our device management software reports on the status of your machines, including hardware, software and device activity.



## NETWORK CLOUD BUNDLE BENEFITS

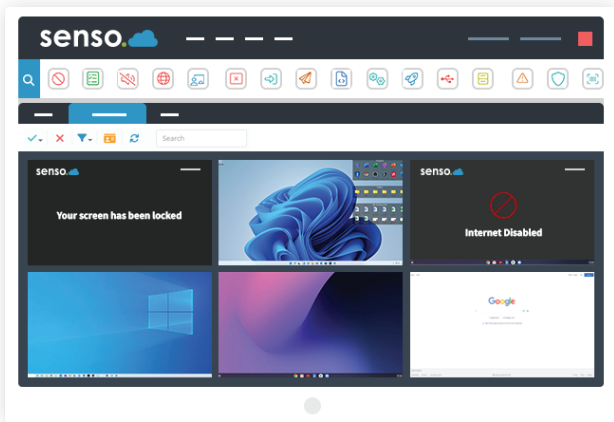
Device management software that provides IT teams with a comprehensive suite of network administration tools, designed to help streamline networks, improve efficiency and save time.



- ✓ **Managed via a Centralised Web-based Portal.**  
Works on your smartphone, tablet or computer.
- ✓ **Track, Monitor and Manage.**  
Enables IT staff to remotely track, monitor, and manage devices anywhere in the world.
- ✓ **Built for Scale.**  
It doesn't matter if you only need to manage a few devices or an entire Multi-Academy Trust (MATs).
- ✓ **Real-time Module.**  
Gives you peace of mind that you are running the latest release of Senso.
- ✓ **Developed for IT Teams.**  
Streamline day-to-day IT related activities.

# OUR ESSENTIAL MODULES

Live Thumbnail View ↗



## Live Thumbnail View

Monitoring made easy, with the option to take control of devices if help is required.

## Remote Control

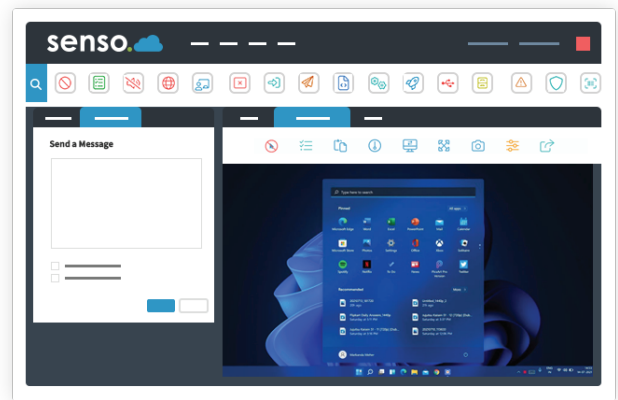
Take control of devices with ease. Easily assist a user or take control of a single device, or of multiple devices.

## Send Message

Send a message to a single student or to multiple students. Prompt students in just a few clicks.

## Substitute Teacher

Share groups with substitute teachers or teaching aids. Administrators can invite a substitute teacher to see all of their required classes.



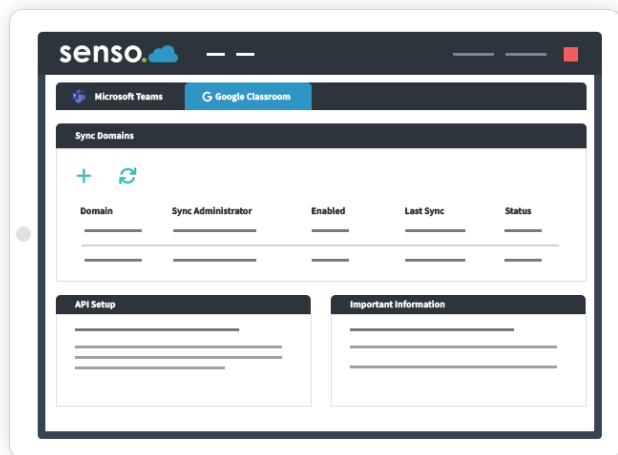
Send Message ↖

## Microsoft Teams Sync

Effortlessly sync your school or business' Microsoft Teams groups automatically for easy screen access.

## Google Classroom Sync

Your school Google Classroom groups can be synced automatically for easy screen access.



## Azure AD

Azure AD allows access to grouping and user-based information. Allows automatic sync to pull.

## Client Updater

Update your client in just a single click or schedule an update for a more convenient time.



# FEATURES FOR IT TEAMS

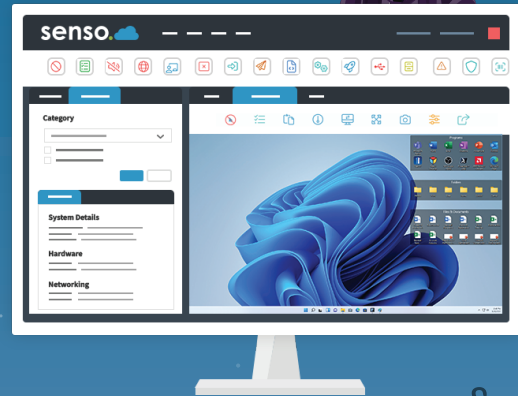


## System Info

Manage your devices and retrieve system information about your devices such as CPU speeds, RAM speeds, BIOS and installed software.

## Command Prompt

Send a command line to a single device or multiple devices, these can be executed silently as an administrator.



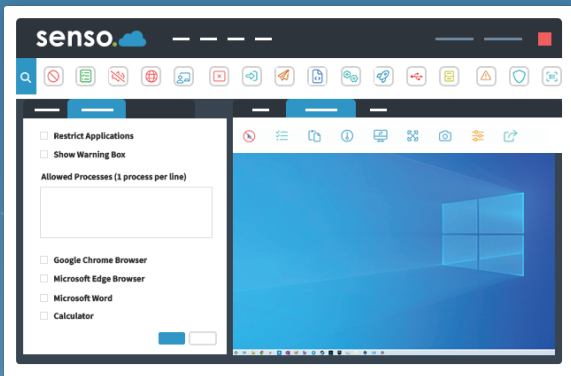
System Info

## Send File

Access and send files from anywhere to single or multiple devices. Send File has the ability to run files as an administrator.

## Block USB

Prevent students from using unauthorised USB devices with storage capabilities.



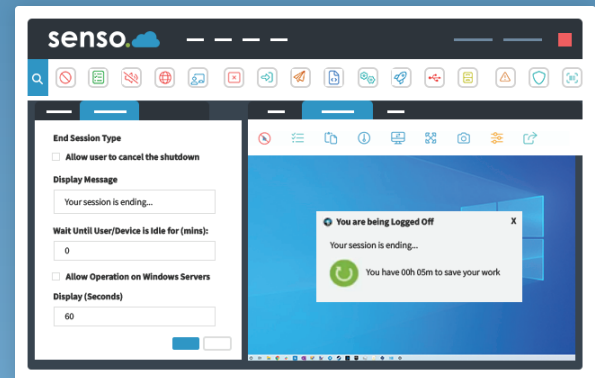
Block USB

## End Session

Remotely log users out, restart or shutdown a device with the ability to schedule these actions.

## Event Viewer

Pull Windows Error Log events such as applications, security, setup and system.



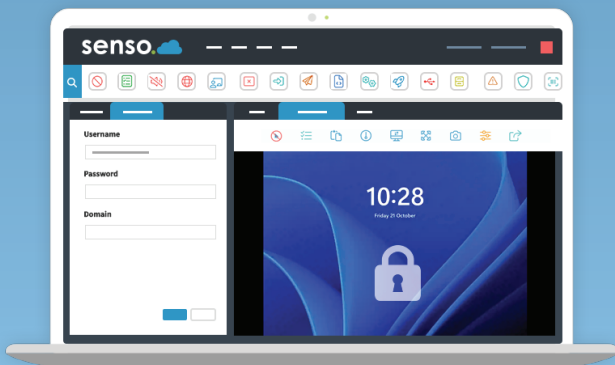
End Session

## Remote Login

Allows you to remotely log on to one or more machines using the credentials you provide.

## MiMiC Script

A custom scripting language that allows you to execute keyboard commands on one or more devices.



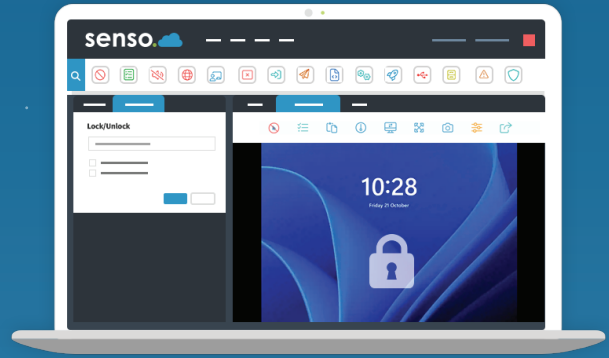
Remote Login

## Remote Script

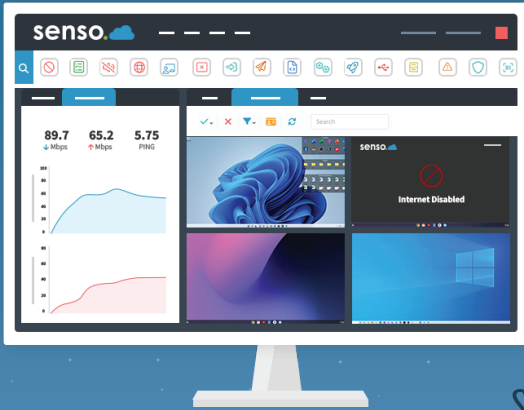
Run batch, PowerShell and Visual Basic scripts on the your remote devices from anywhere.

## Lock/Unlock Windows

Take control of Windows devices by locking or unlocking the remote Windows machine.



Lock/Unlock Windows



Speed Test

## Speed Test

Test the internet upload and download speed of Windows devices.

## Registry Edit

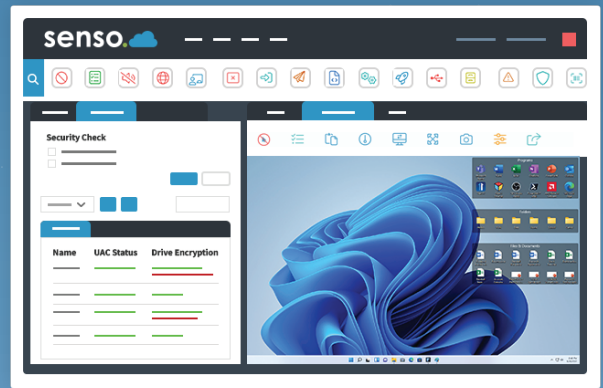
Create or edit registry keys remotely. Use as a policy to change keys at start-up.

## Wake on LAN

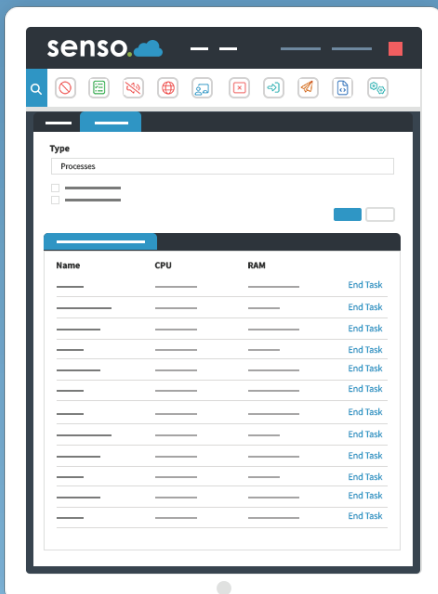
Remotely power on machines that are powered off, with the ability to deliver a SecureON password.

## Security Check

Check the status of various security implementations such as UAC, drive encryption and anti-virus status.



Security Check



Task Manager

## Task Manager

See all processes and services running on the remote computer or check TCP Connections.

## Client Tool Bar

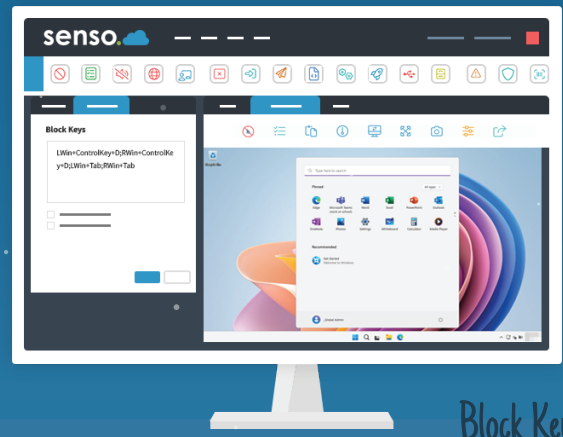
Show a toolbar with Show Support Ticket option, Anonymous Reports, join PIN Group options and Show Raise Concern option.

## Reset Password

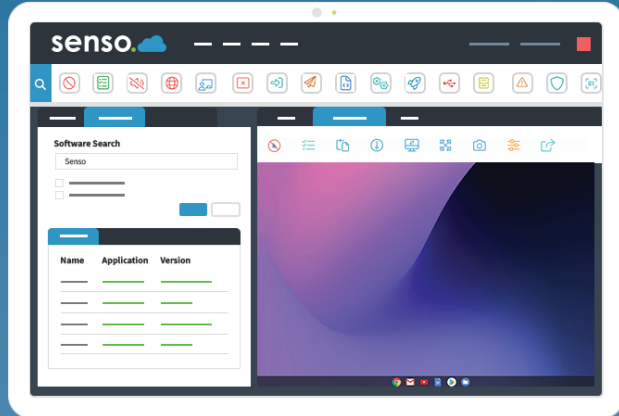
Give teachers the ability to reset student AD passwords without giving them access to Active Directory.

## Block Keys

Allows you to disable certain keys or key combinations to prevent unwanted distractions or features.



Block Keys



Software Search

## Launch

Open an application or a specific website for the entire class to keeps students on target.

## Client Live Chat

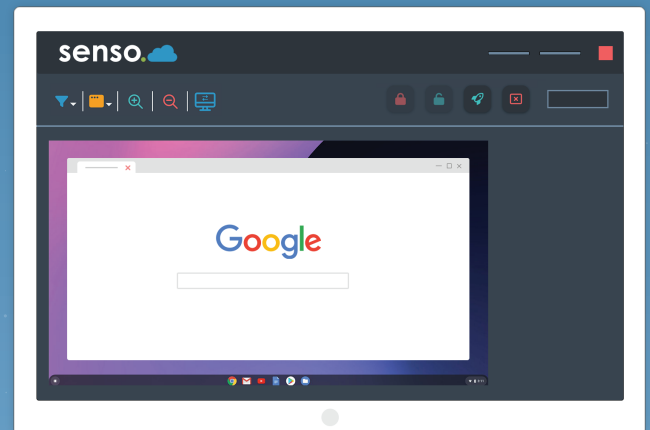
Allows a two-way chat between a console and user. Ideal for offering remote support to students during lessons.

## Service Management

Stop, start and restart services on Windows machines.

## Software Search

Search for specific software installed on a device.



Launch



# OUR PARTNERSHIP WITH PSP

With 20+ years of experience working in senior leadership roles in education, our technology professionals will act as your digital lead. We'll ensure your technology delivers value for money and complies with the latest guidance from the DfE.

As a Senso partner, we can provide quick and easy installation of Senso software and deploy the tool across all your school devices. The service we offer is customisable based on your school size, integrations, licensing, and features, and more.

When you purchase your Senso solutions through PSP, you benefit from fully supported implementation and deployment, on-demand customer support, along with advice from our technical consultants.



## PRICING



**CLASS  
CLOUD**

**£2.45** / device ann.



**NETWORK  
CLOUD**

**£2.45** / device ann.



**SAFEGUARD  
CLOUD**

**£3.45** / device ann.



**ENTERPRISE  
CLOUD**

**£5.45** / device ann.



**MICROSOFT  
TEAMS**

**£0.95** user / year



**CONTENT  
FILTERING**

**£1.95** device / year



**ASSISTED  
MONITORING**

Get in touch for more  
information

## SEE SENSO SOFTWARE IN ACTION

Get in touch with one of our technology professionals and see how Senso's filtering and monitoring software can help your school.

**letstalk@psp-it.co.uk | 01775 722377**